



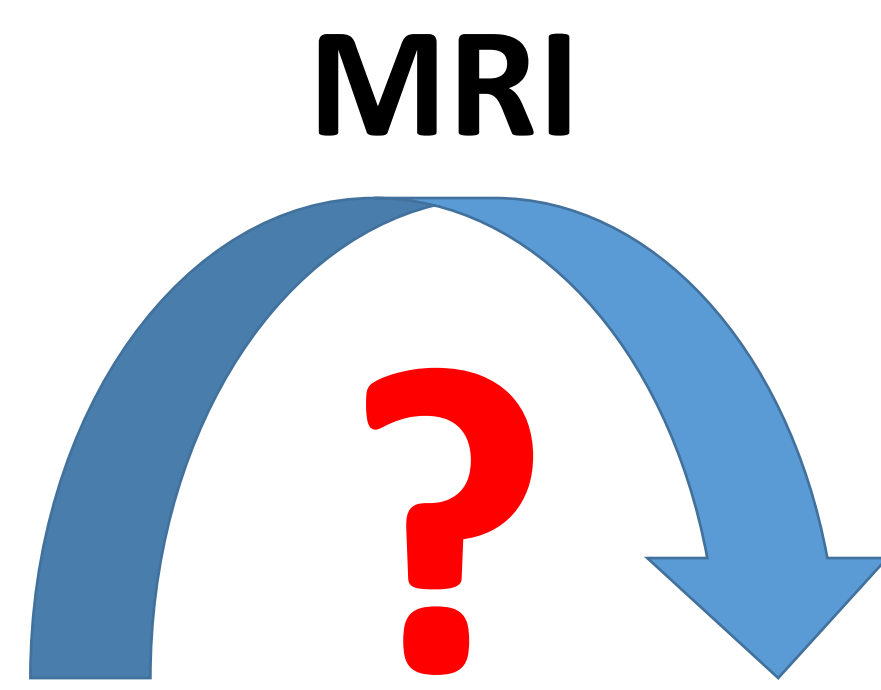
The usefulness of MRI to diagnose placenta accreta spectrum and to predict adverse perinatal outcomes in pregnant women with placenta previa

Subin Jo, Yun Ji Jung, Ha Yan Kwon, Ja Young Kwon, Young-Han Kim, JoonHo Lee

Department of Obstetrics and Gynecology, Yonsei University College of Medicine, Seoul, Korea

OBJECTIVE

Placenta previa on US

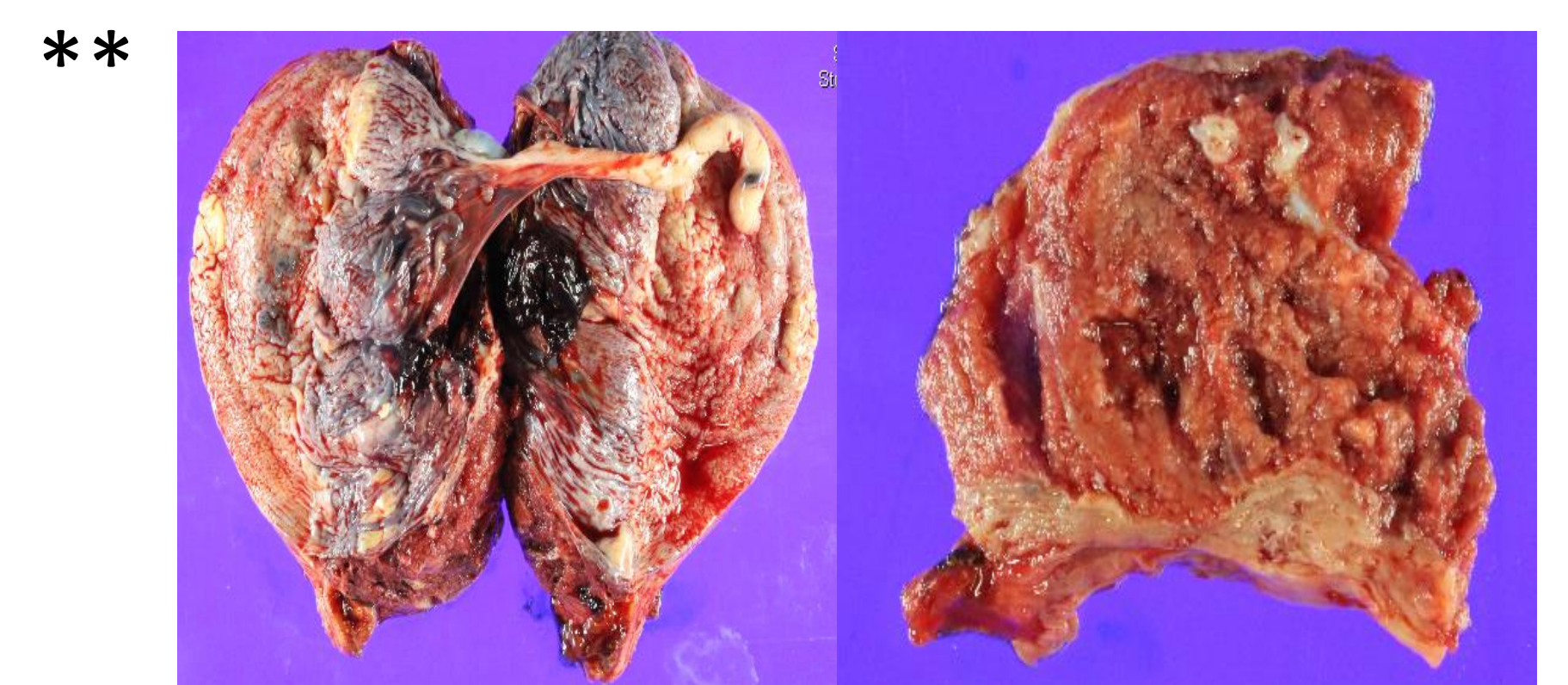
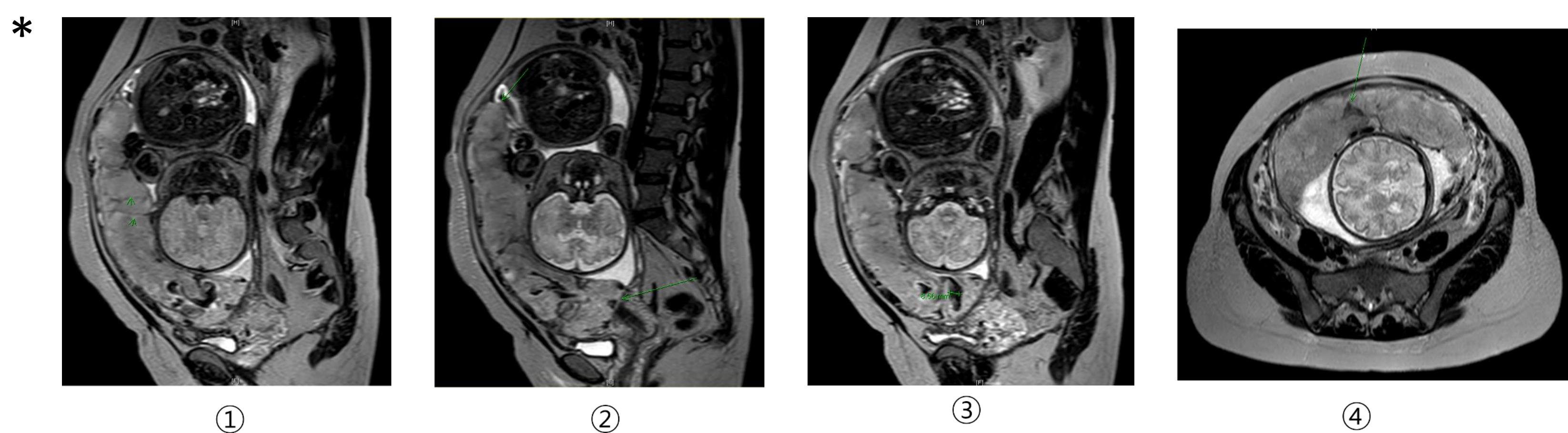
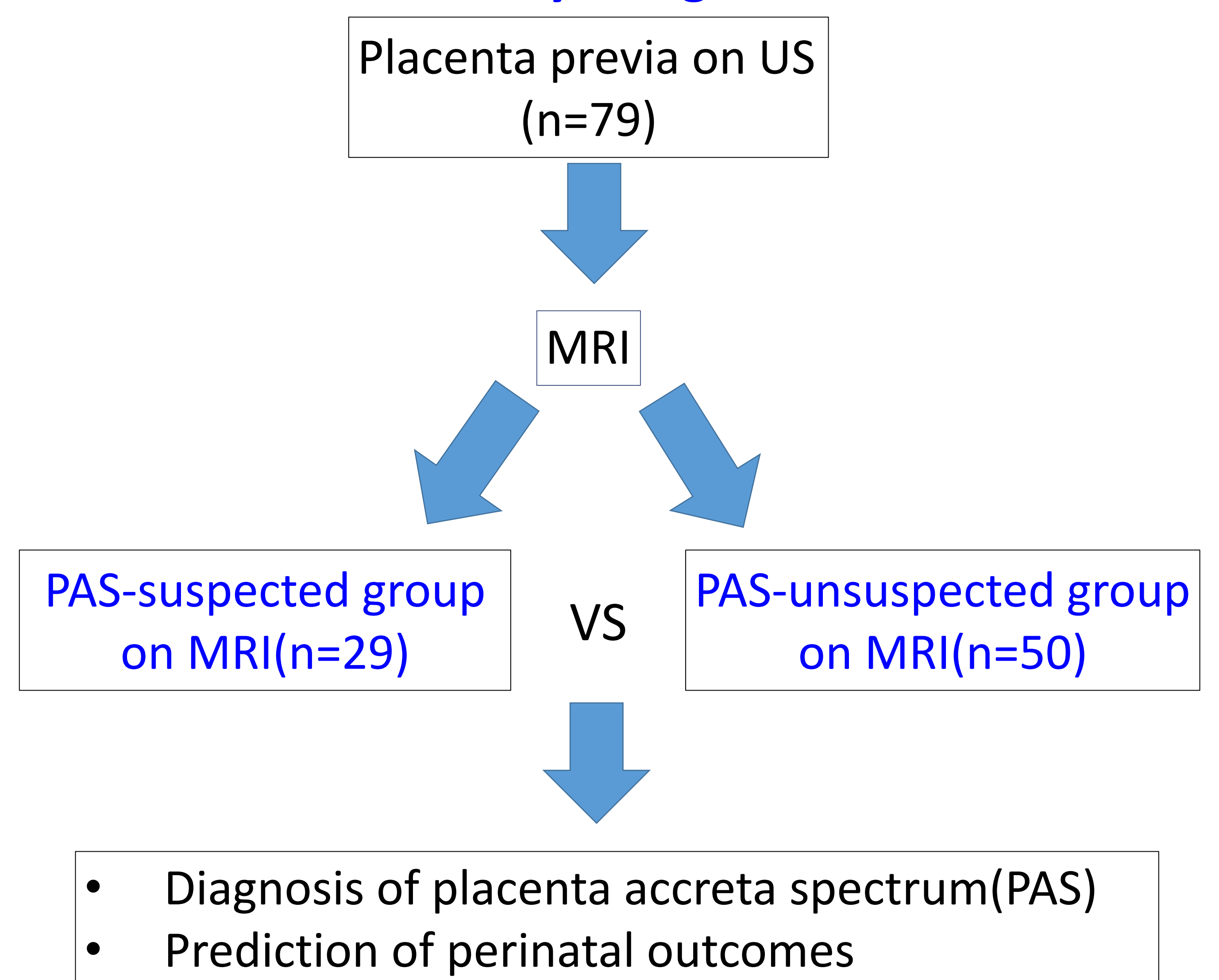


- Diagnosis of placenta accreta spectrum(PAS)
- Prediction of perinatal outcomes

METHODS

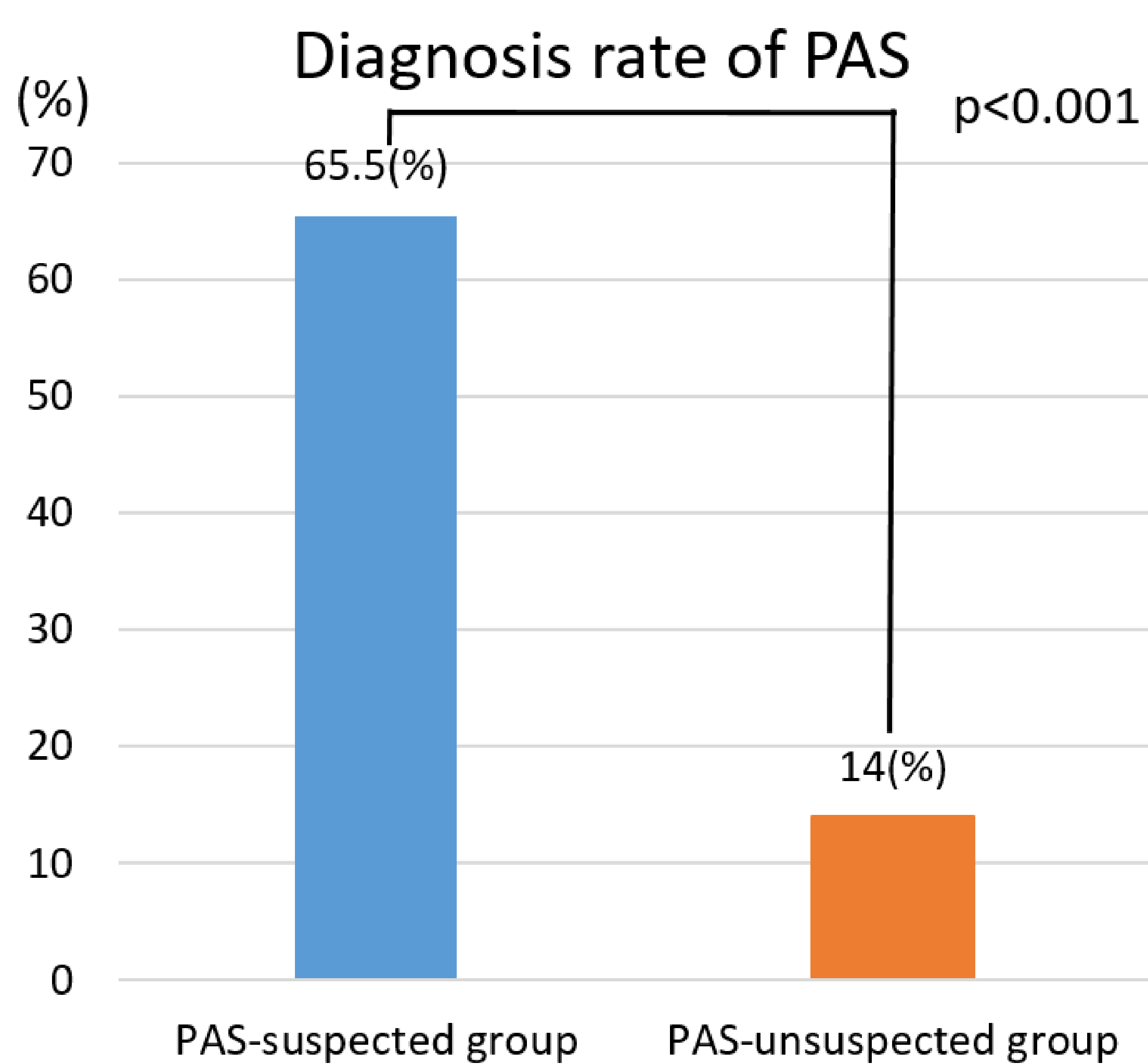
- Retrospective cohort study
- Inclusion criteria
 - 2019.12 ~ 2022.04
 - Placenta previa on US
 - Abdomen and pelvis MRI
- Diagnosis of PAS by MRI*
 - Dark intraplacental band^①
 - Lumpy contour and rounded edge^②
 - Abnormal/disorganized placental vascularity^③
 - Myometrial thinning^④
 - Extrauterine invasion
- Diagnosis of PAS
 - Clinical confirmation by attending physicians or
 - Histologic confirmation**

<Study design>

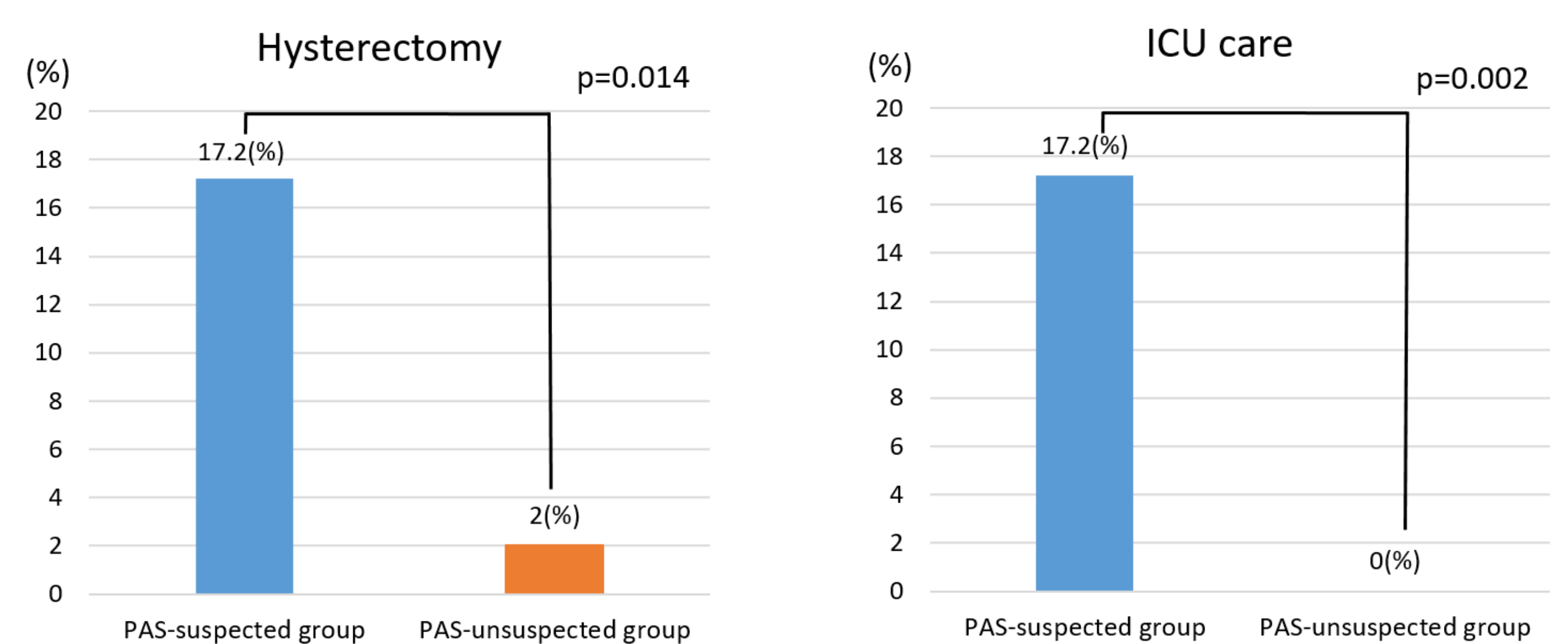


RESULT

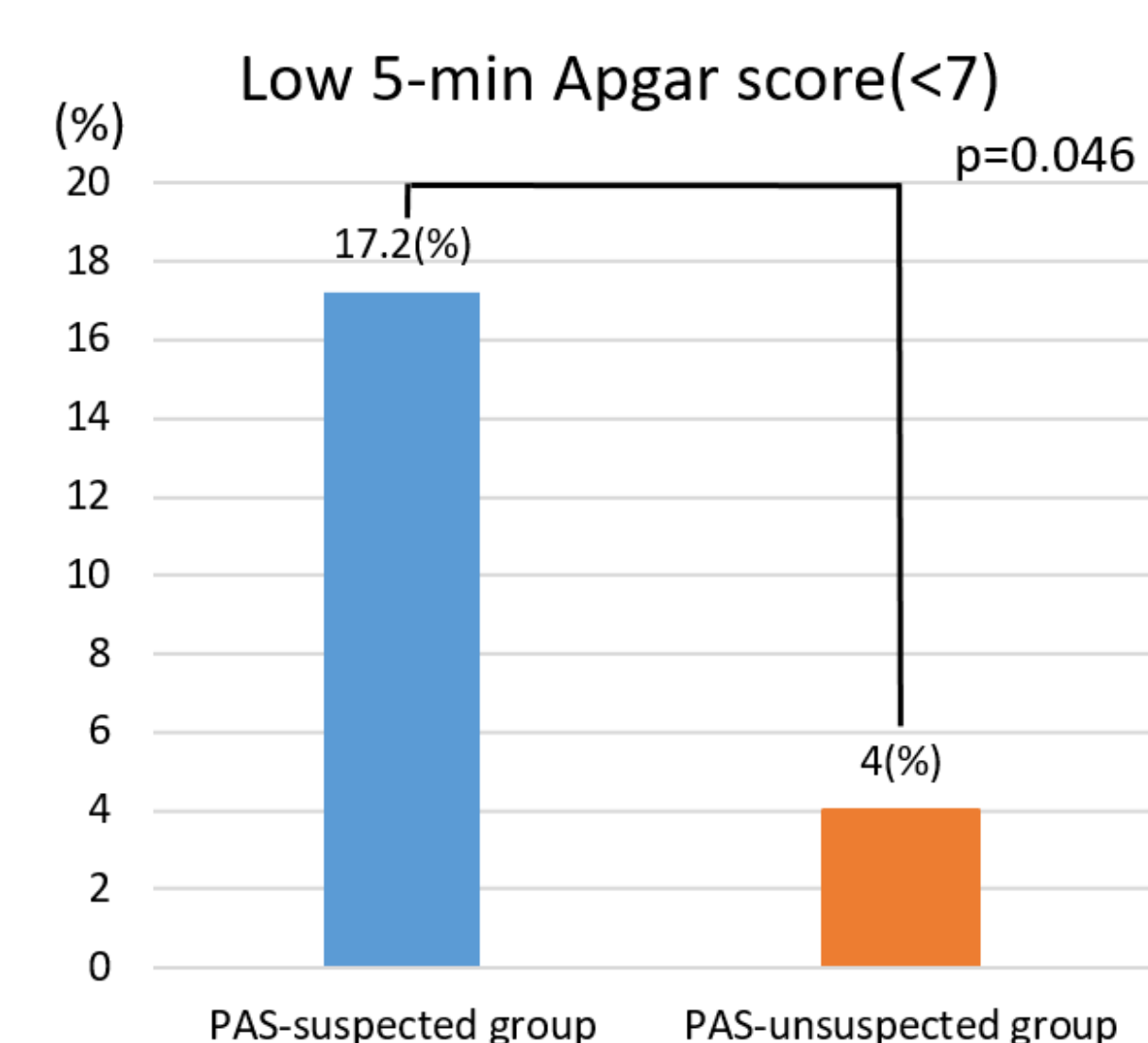
<PAS diagnosis>



<Adverse maternal outcomes>

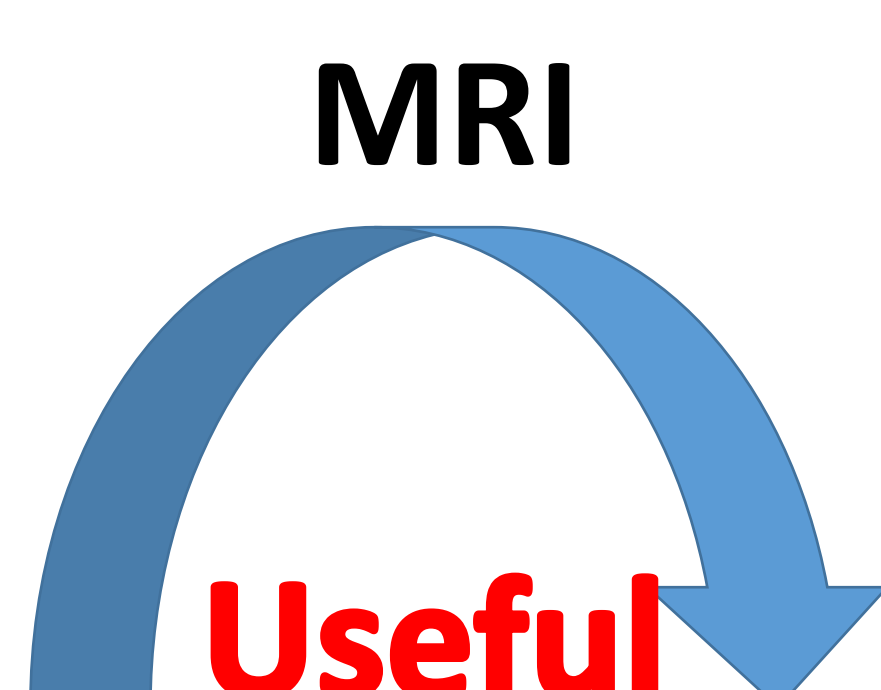


<Adverse neonatal outcomes>



CONCLUSION

Placenta previa on US



- Diagnosis of placenta accreta spectrum(PAS)
- Prediction of perinatal outcomes